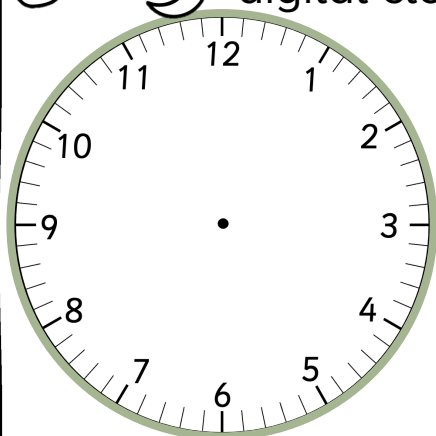
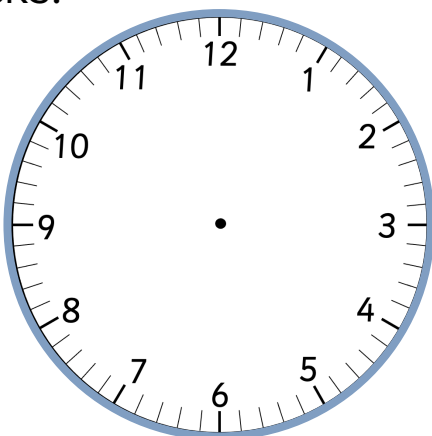


Half past Time

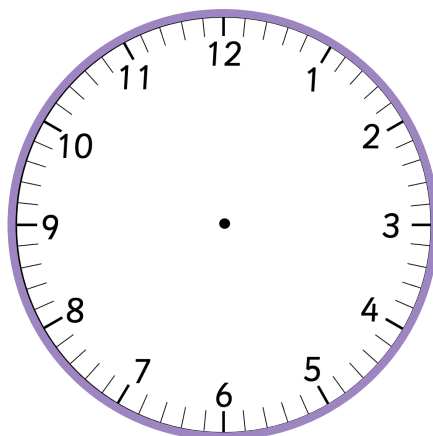
Draw the hands on the analogue clocks to match the digital clocks.



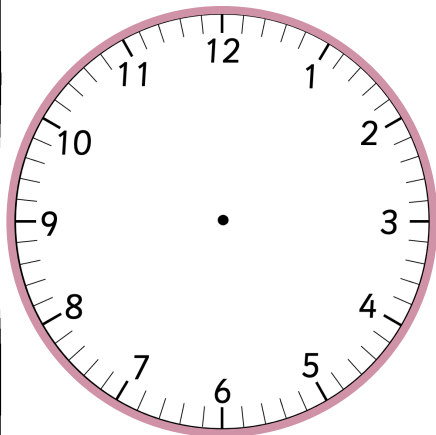
6:30



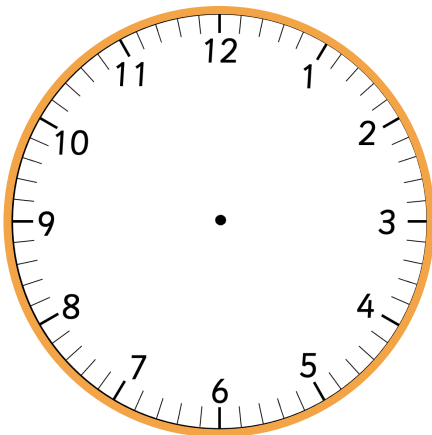
9:30



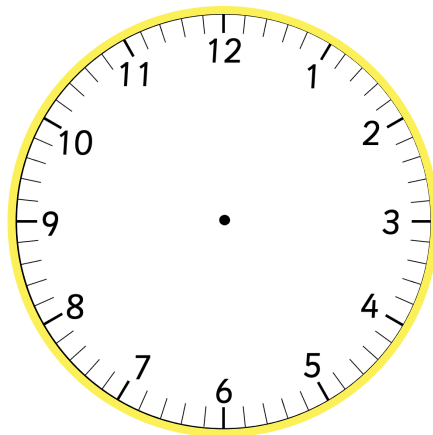
2:30



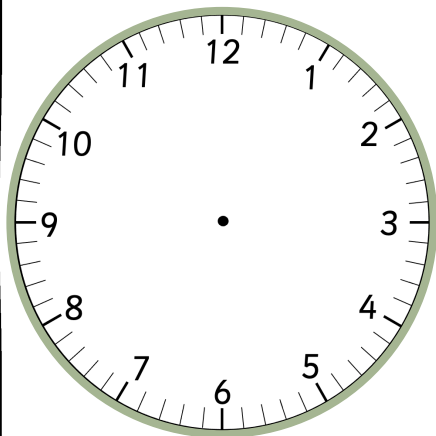
4:30



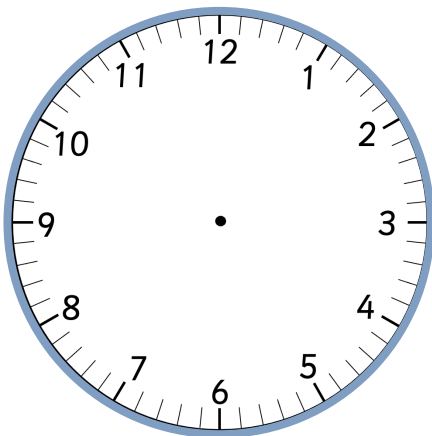
8:30



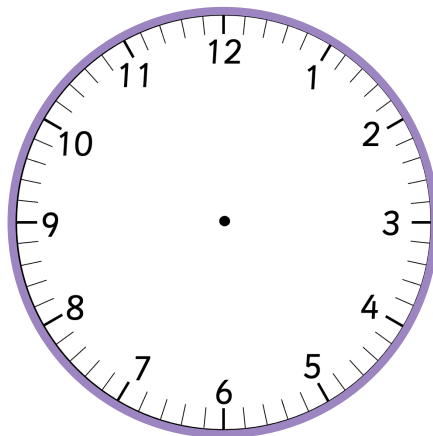
7:30



1:30



3:30

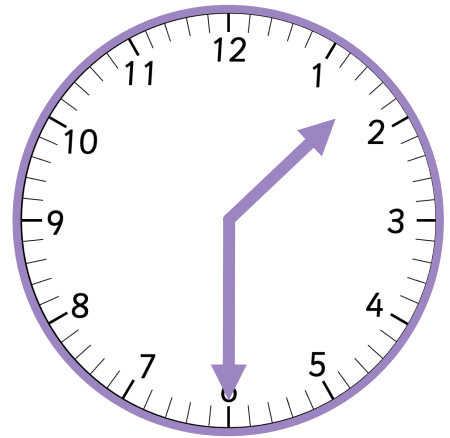
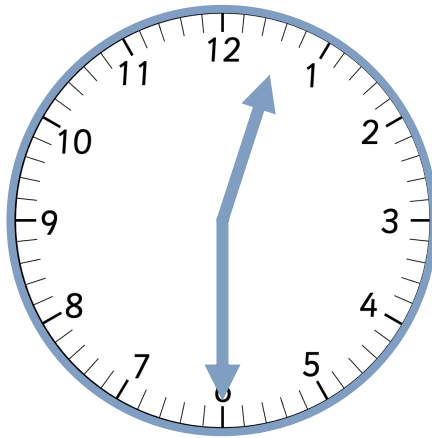
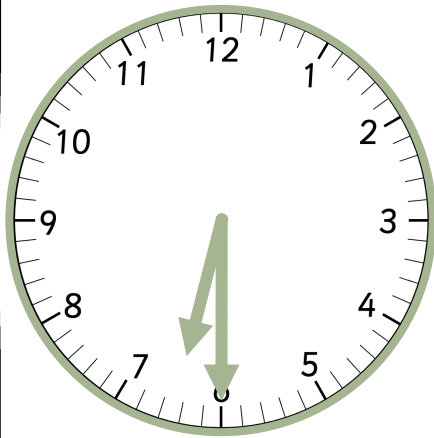
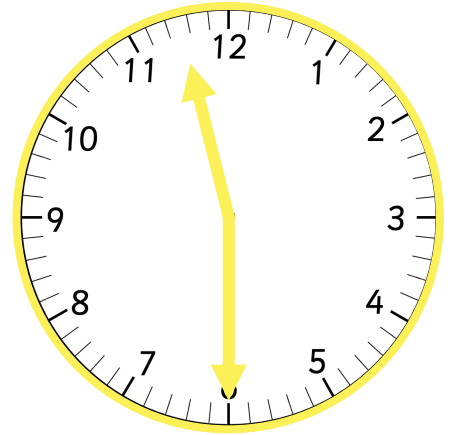
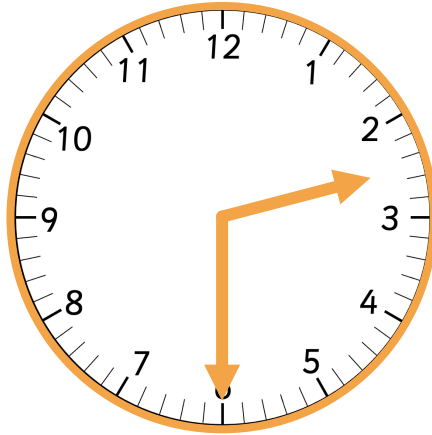
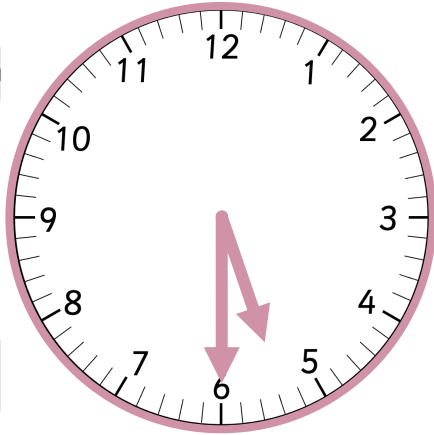
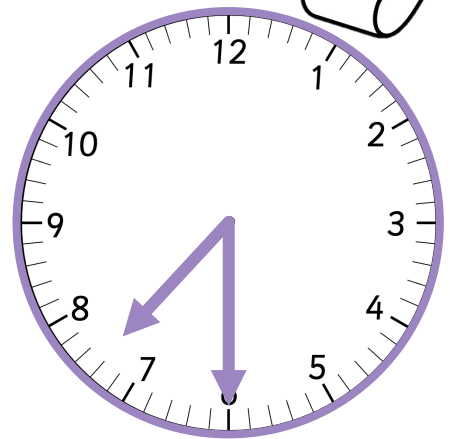
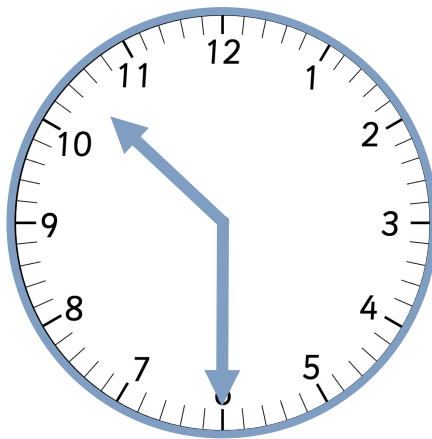
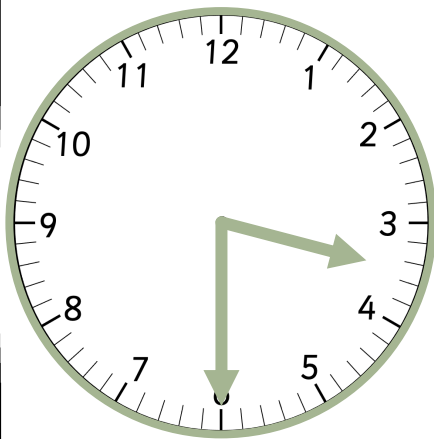
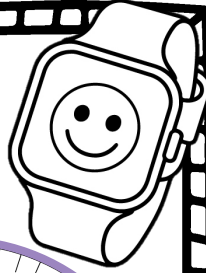


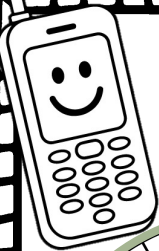
6:30



Half past Time

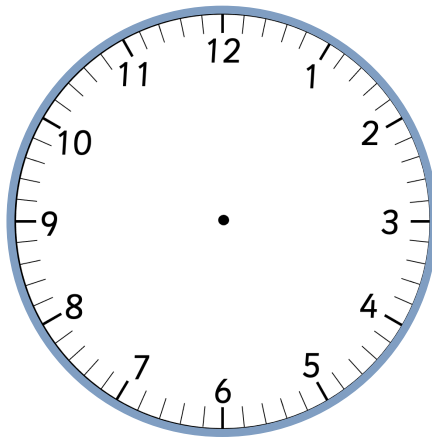
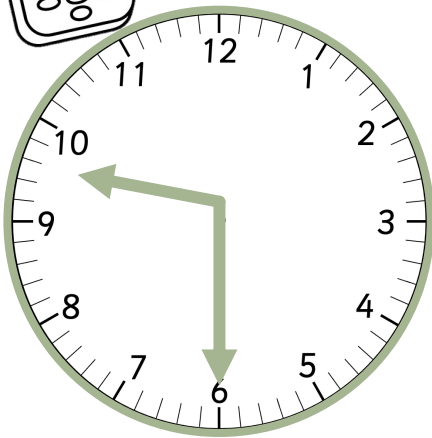
Fill in the digital clocks to match the analogue clocks.



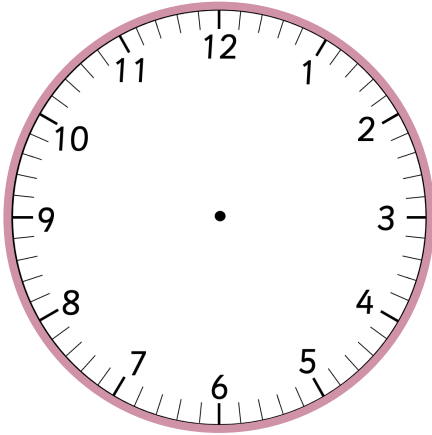
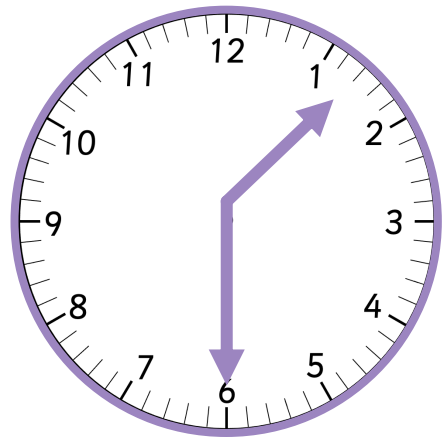


Half past Time

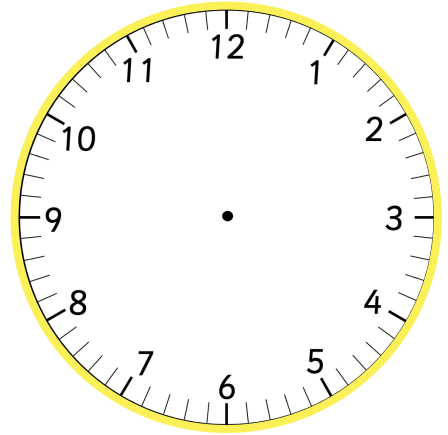
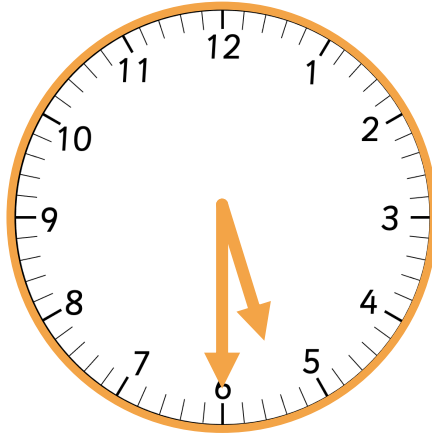
Fill in the missing parts of the clock to match the given times.



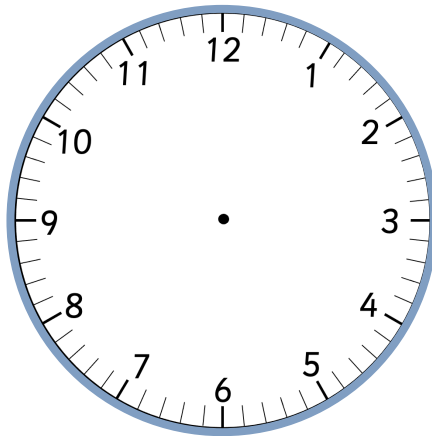
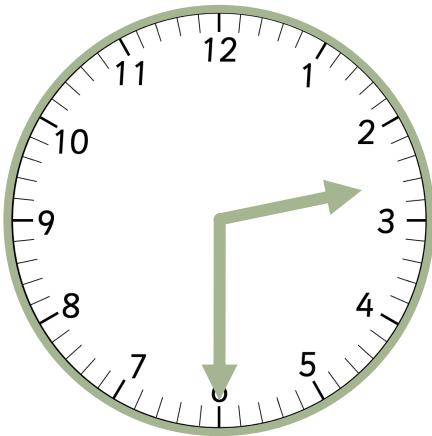
7:30



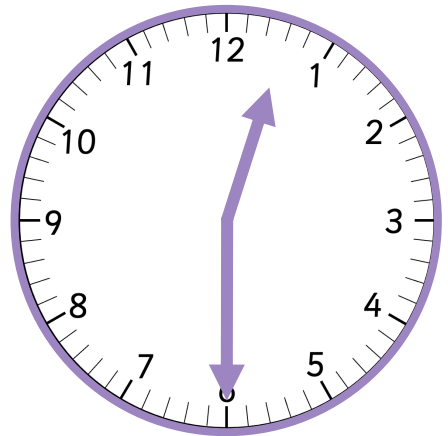
6:30



11:30

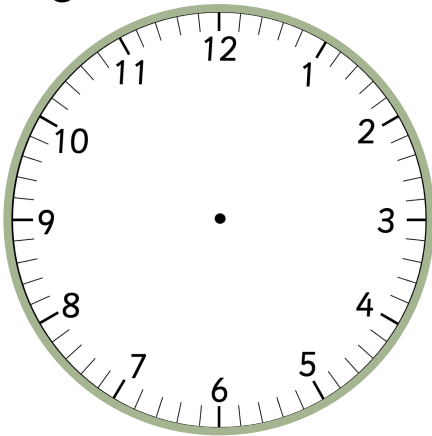


3:30

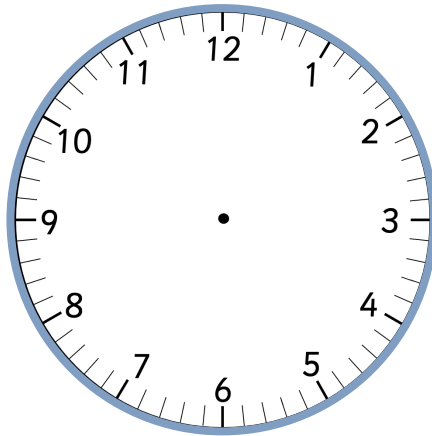


O'clock and Half past Time

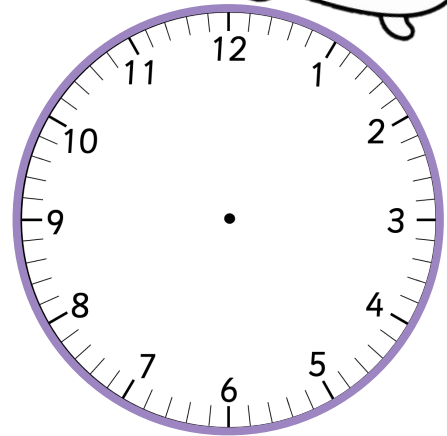
Draw the hands on the analogue clocks to match the digital clocks.



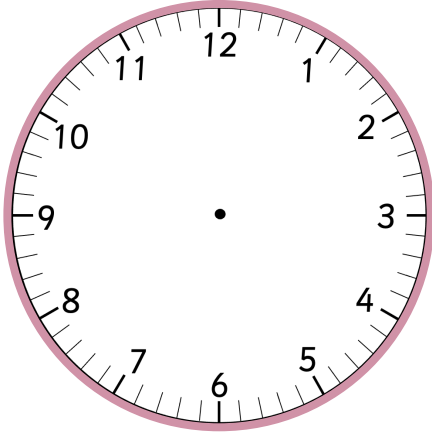
5:30



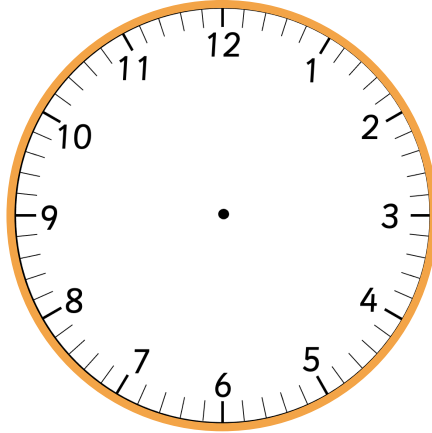
9:00



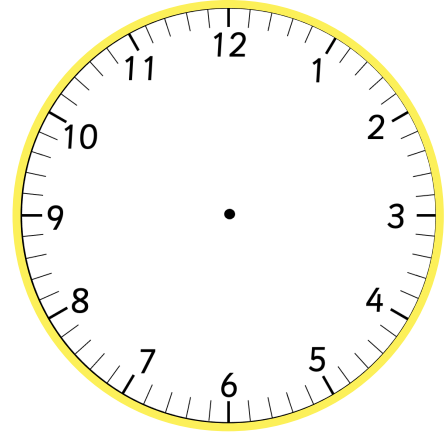
10:30



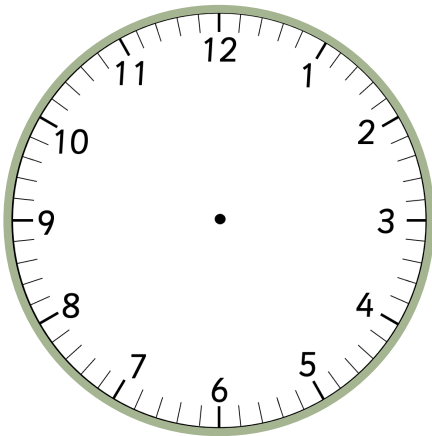
4:00



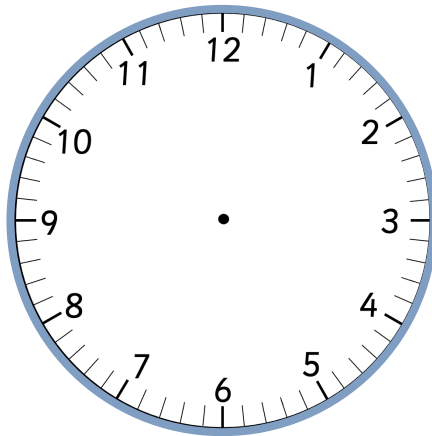
8:30



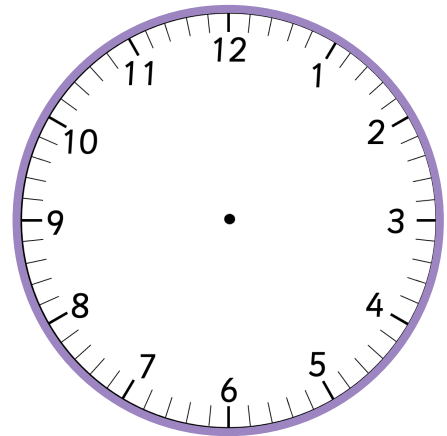
5:00



11:30

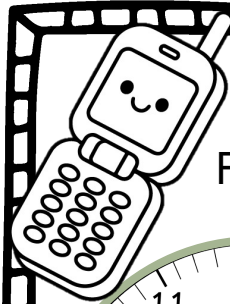


3:00



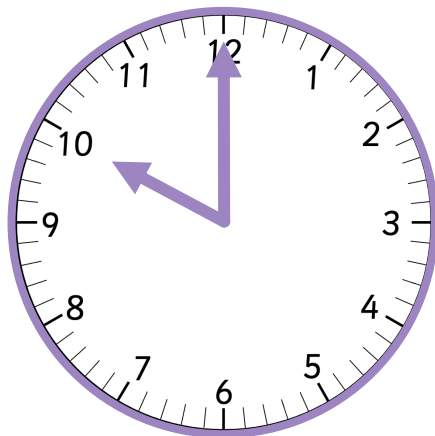
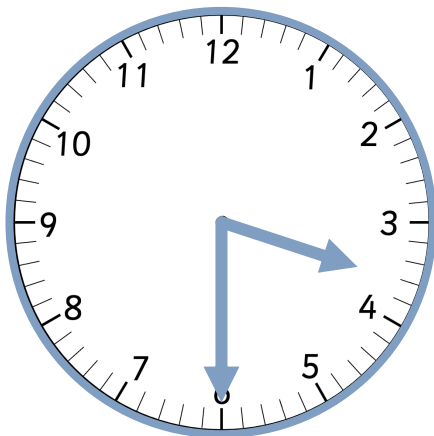
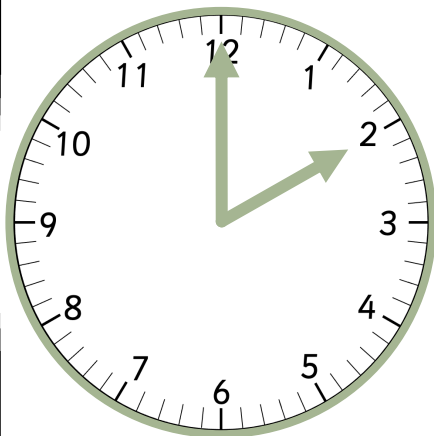
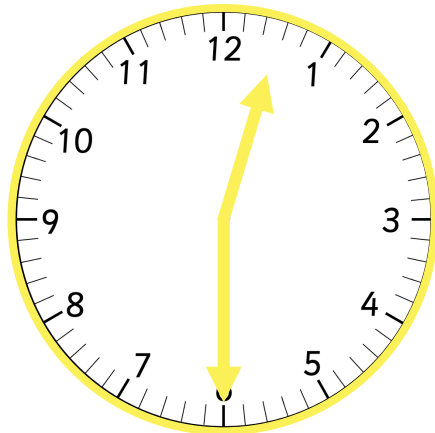
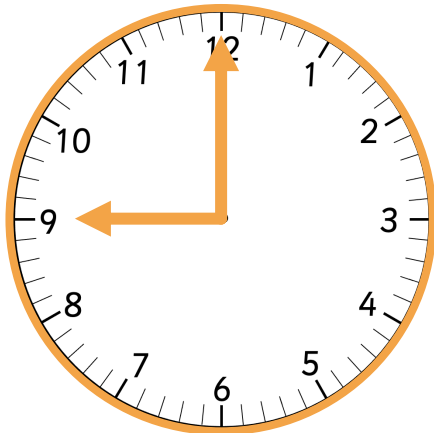
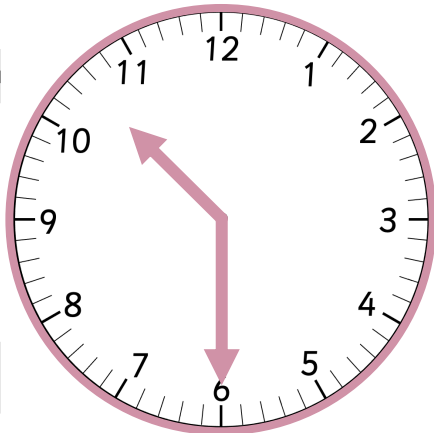
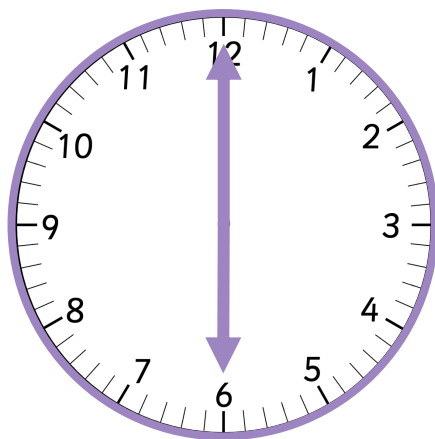
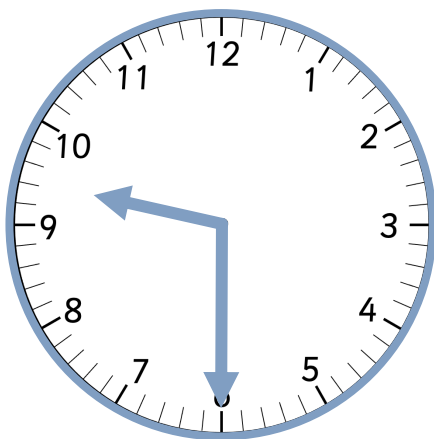
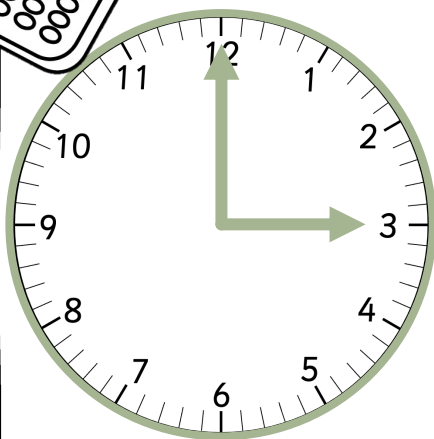
1:30





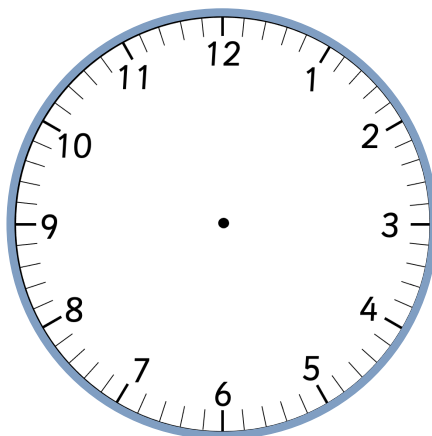
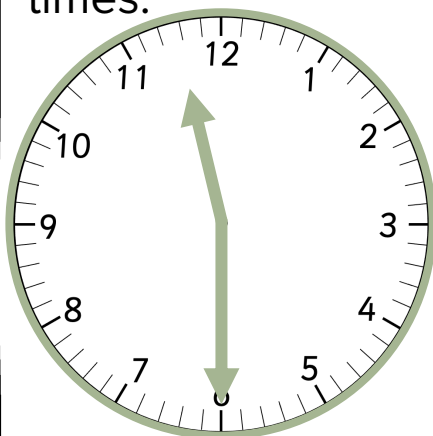
0'clock Half past Time

Fill in the digital clocks to match the analogue clocks.

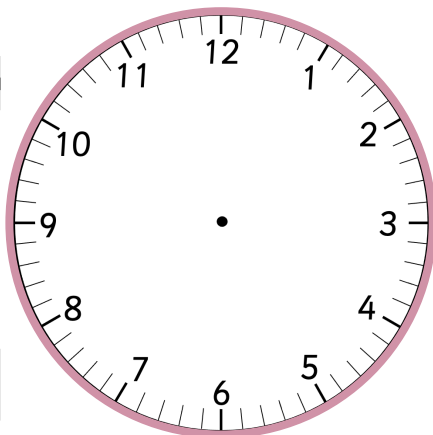
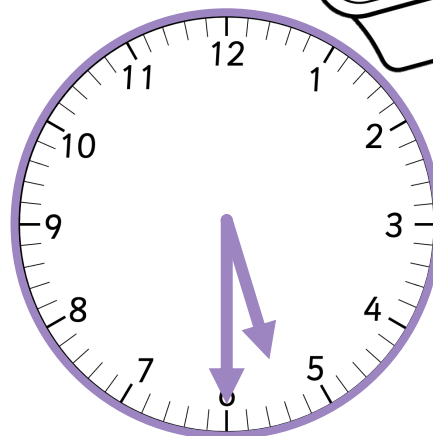


0'clock and Half past Time

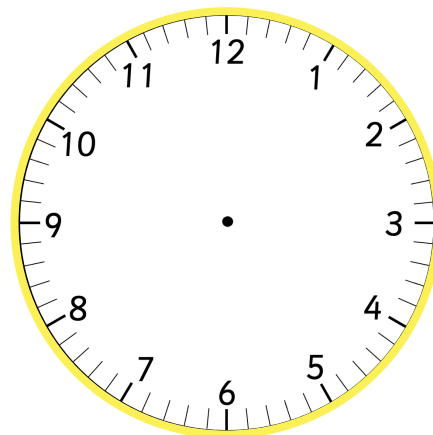
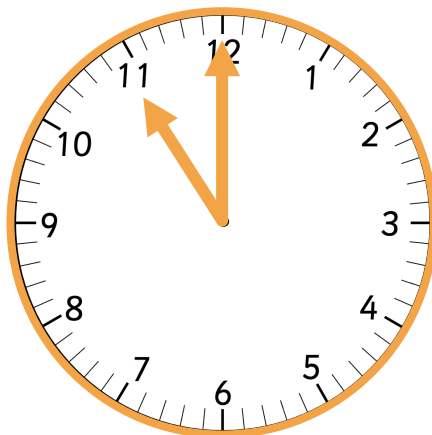
Fill in the missing parts of the clock to match the given times.



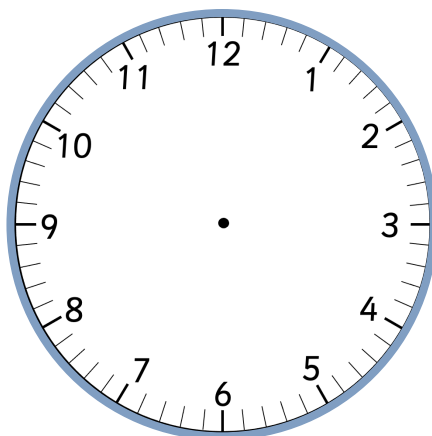
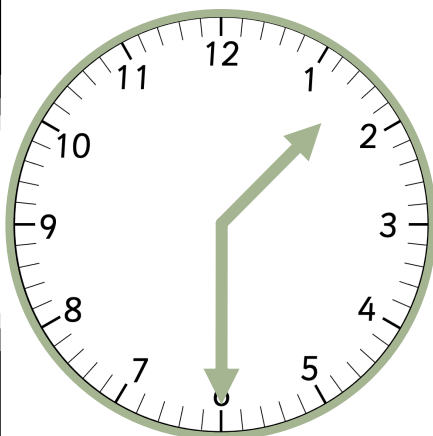
7:00



6:00



11:30



12:00

