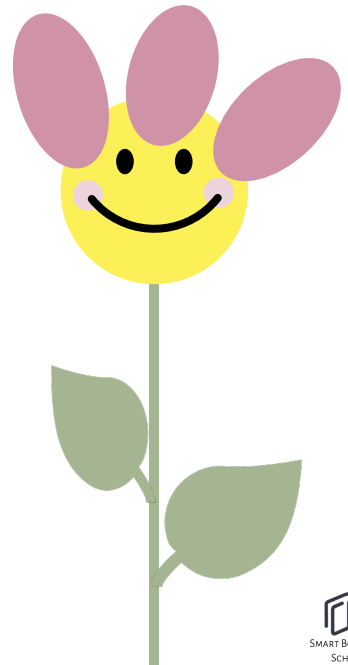
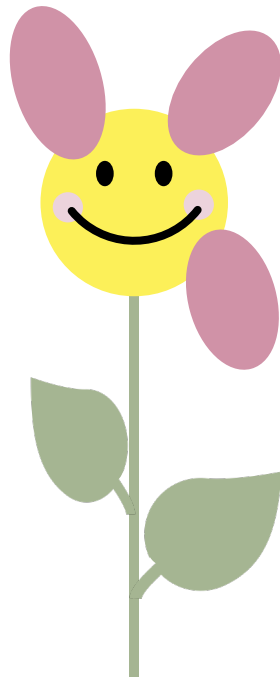
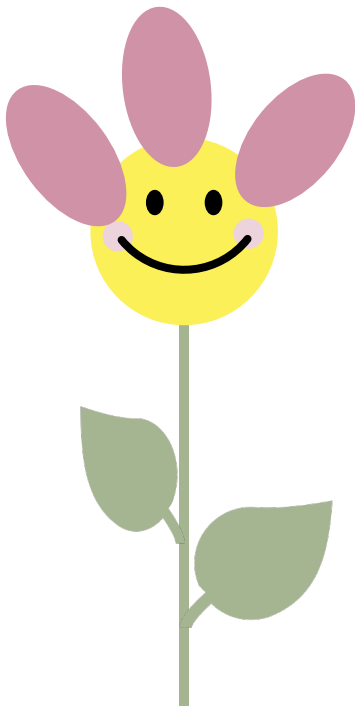


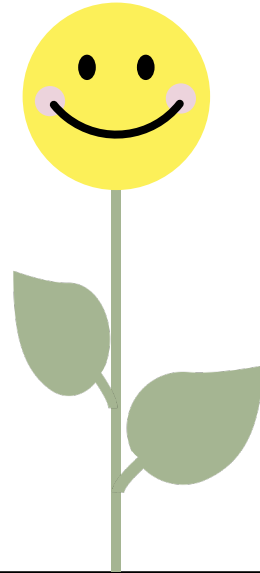
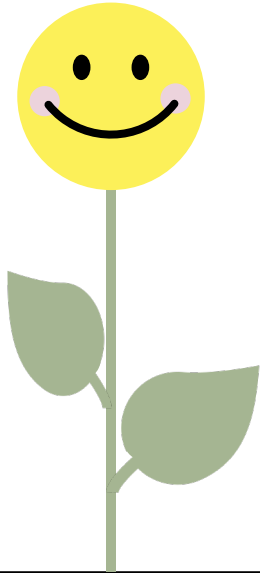
# Equal Group Flowers

Print and laminate pages 2 to 13. Use play dough or dry erase markers to make pedals to match the given statements.

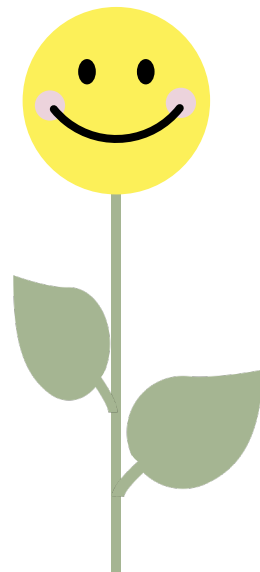
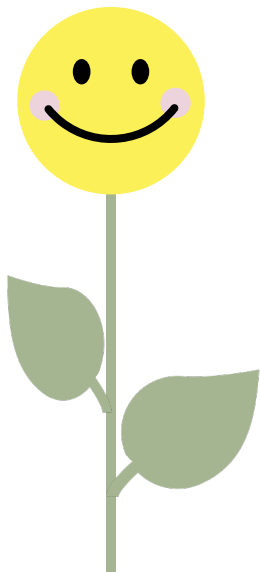
$$3 \text{ groups of } 3 = \boxed{9}$$



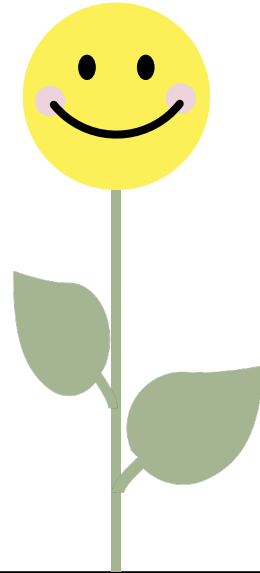
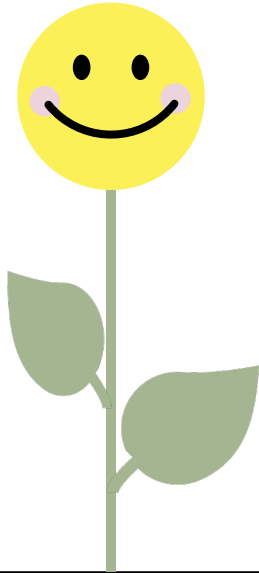
2 groups of 1 =



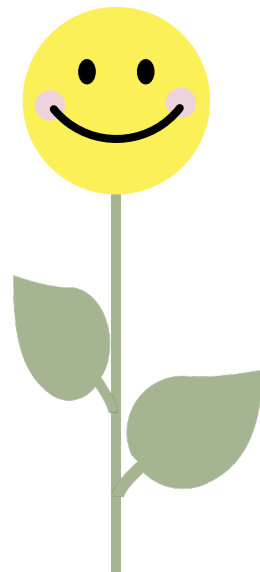
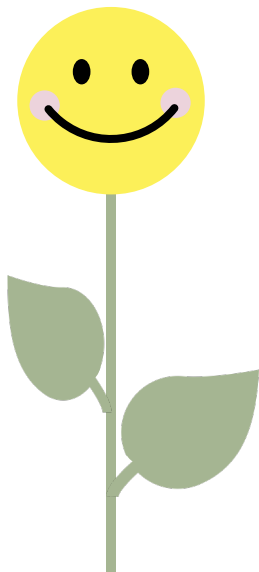
2 groups of 2 =



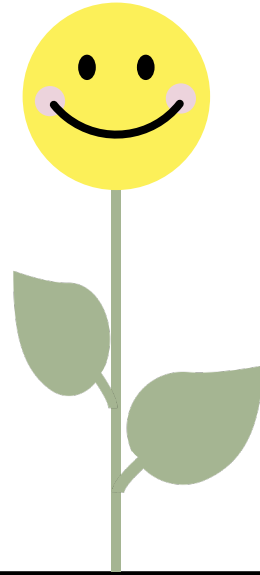
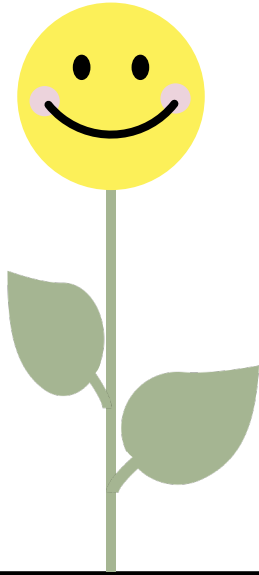
2 groups of 3 =



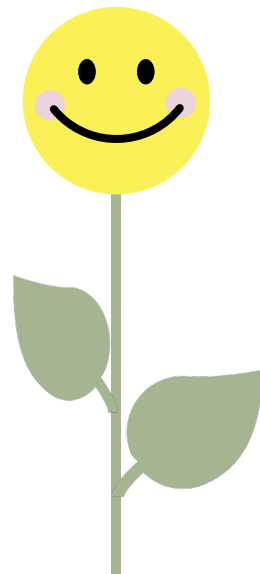
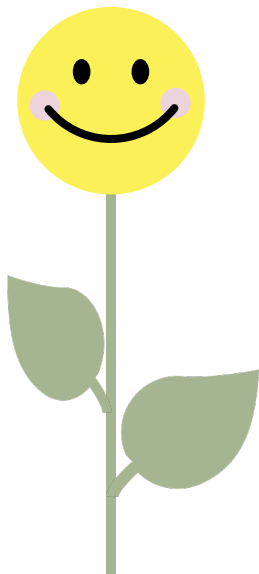
2 groups of 4 =



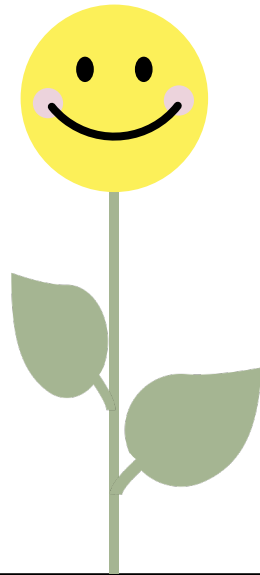
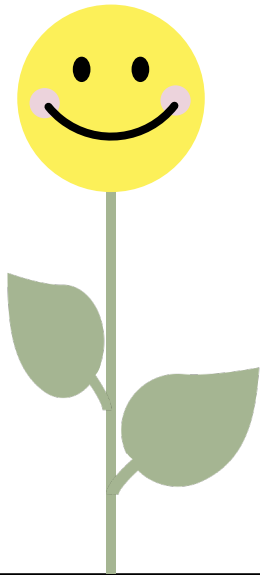
2 groups of 5 =



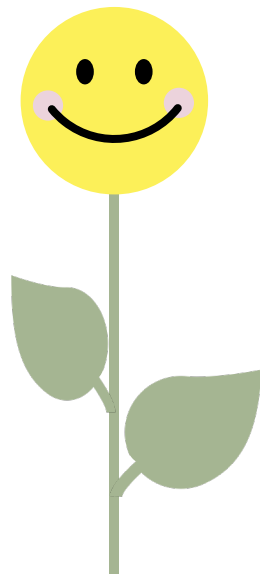
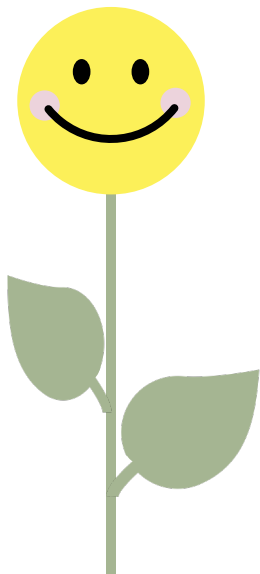
2 groups of 6 =



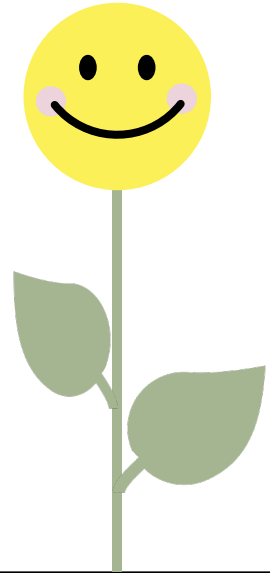
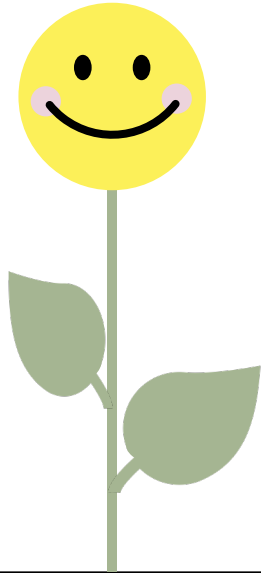
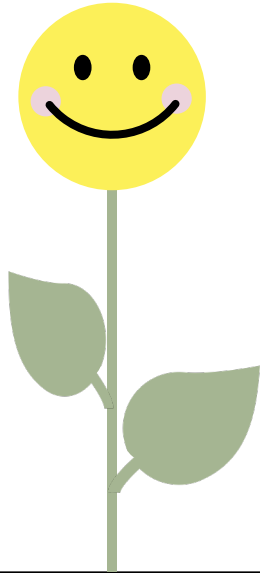
$$2 \text{ groups of } 7 = \square$$



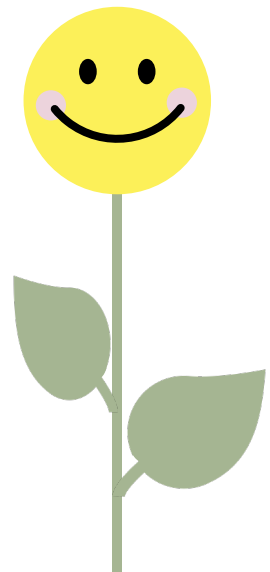
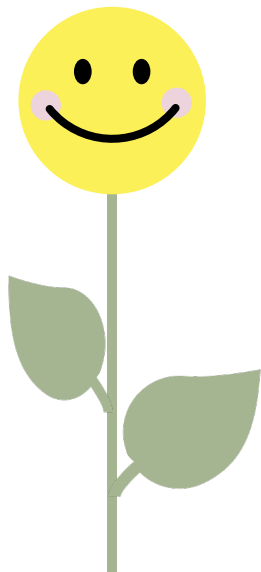
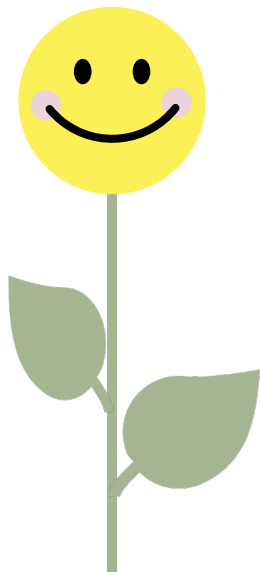
$$2 \text{ groups of } 8 = \square$$



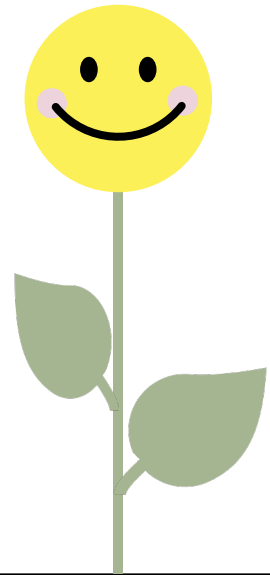
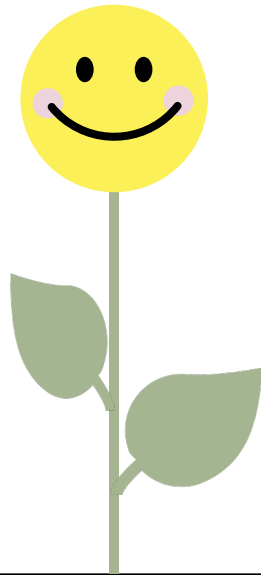
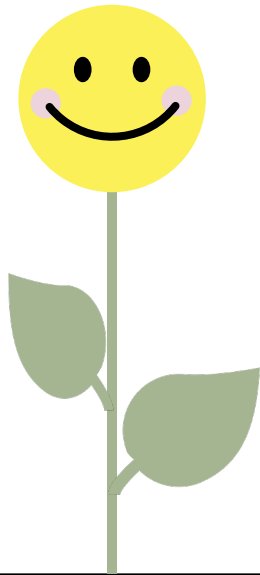
3 groups of 1 =



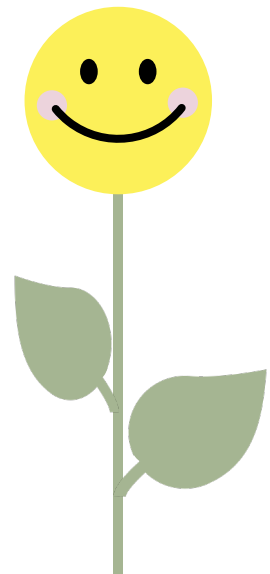
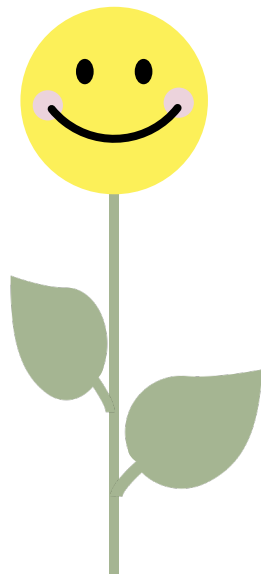
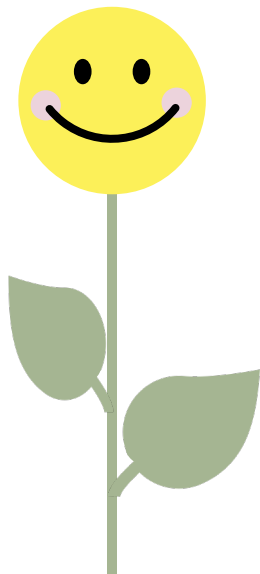
3 groups of 2 =



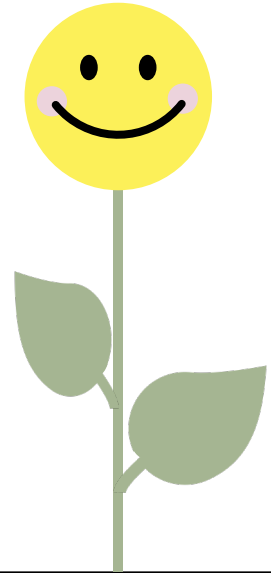
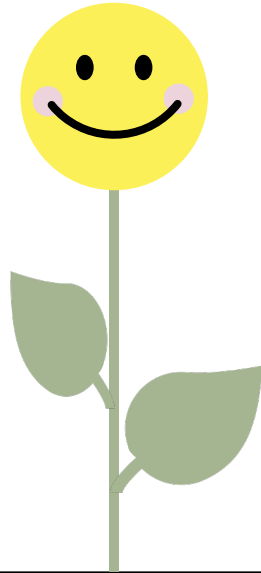
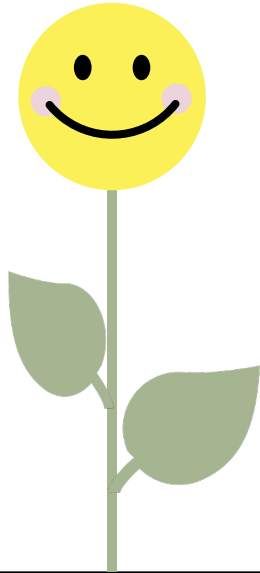
3 groups of 3 =



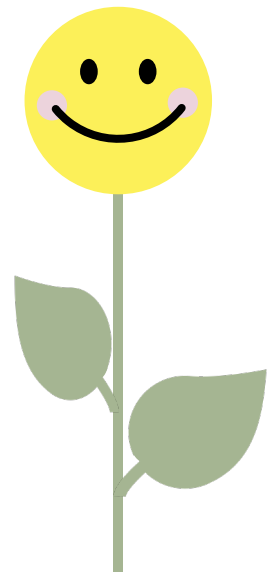
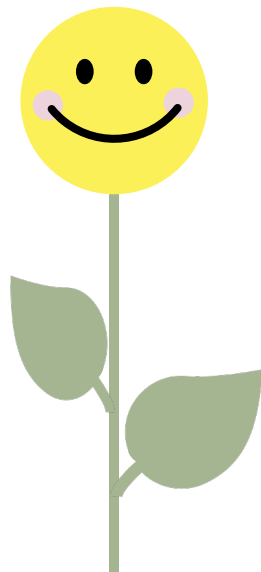
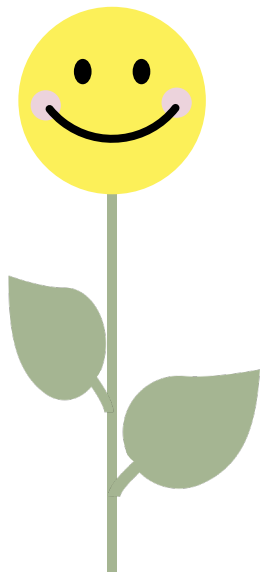
3 groups of 4 =



$$3 \text{ groups of } 5 = \square$$

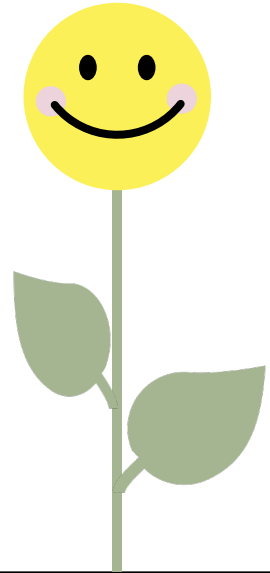
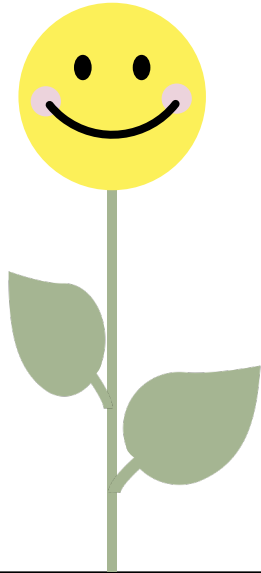
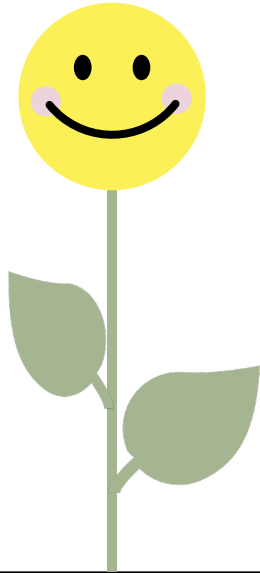


$$3 \text{ groups of } 6 = \square$$

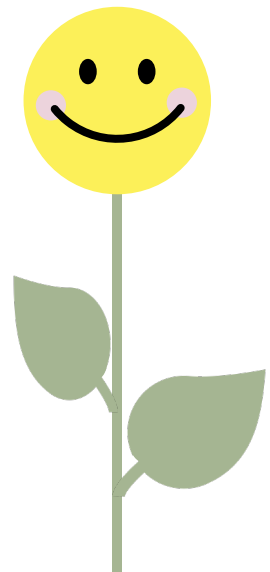
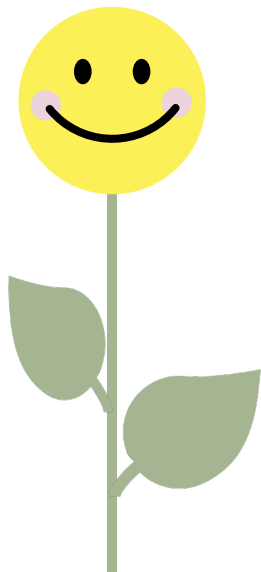
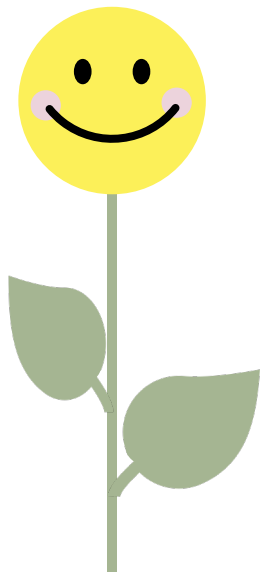




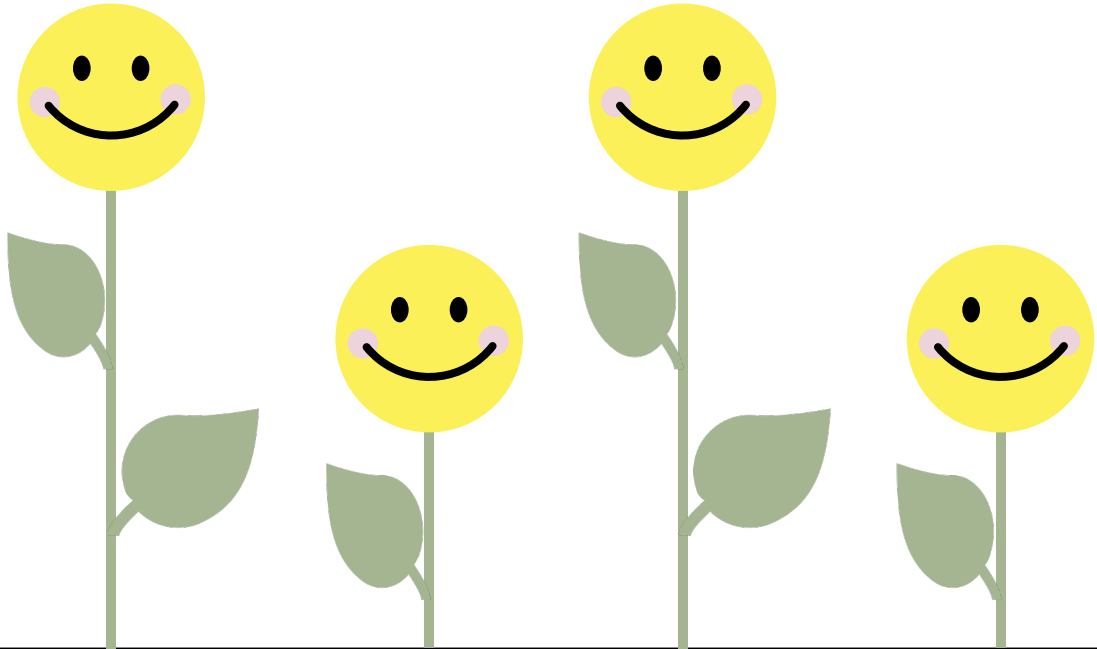
$$3 \text{ groups of } 7 = \square$$



$$3 \text{ groups of } 8 = \square$$



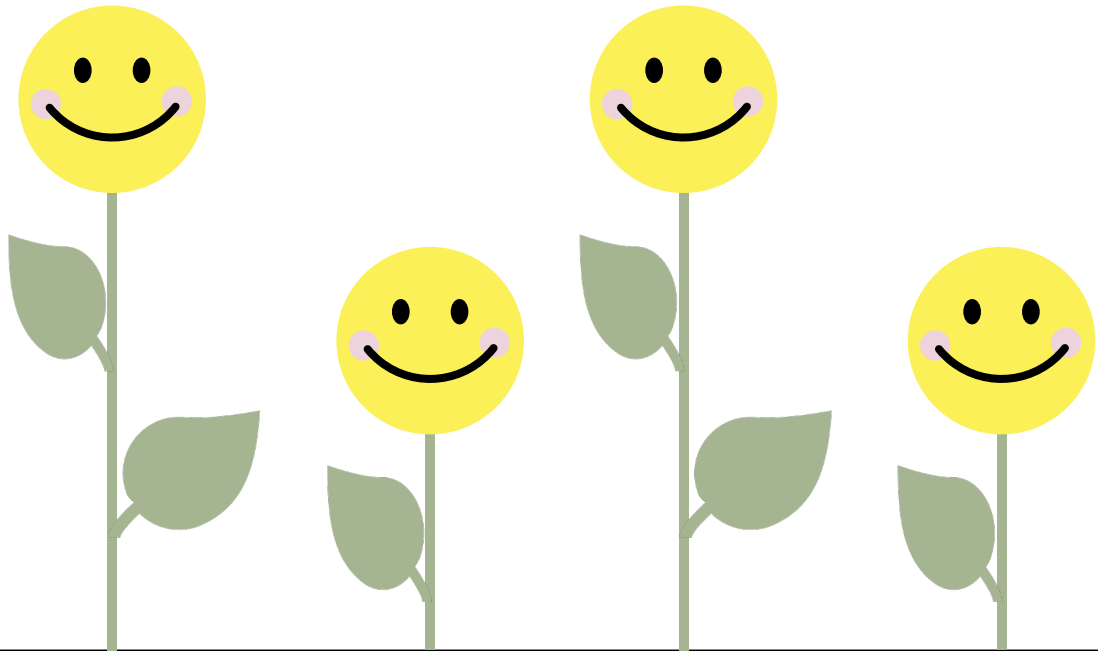
4 groups of 1 =



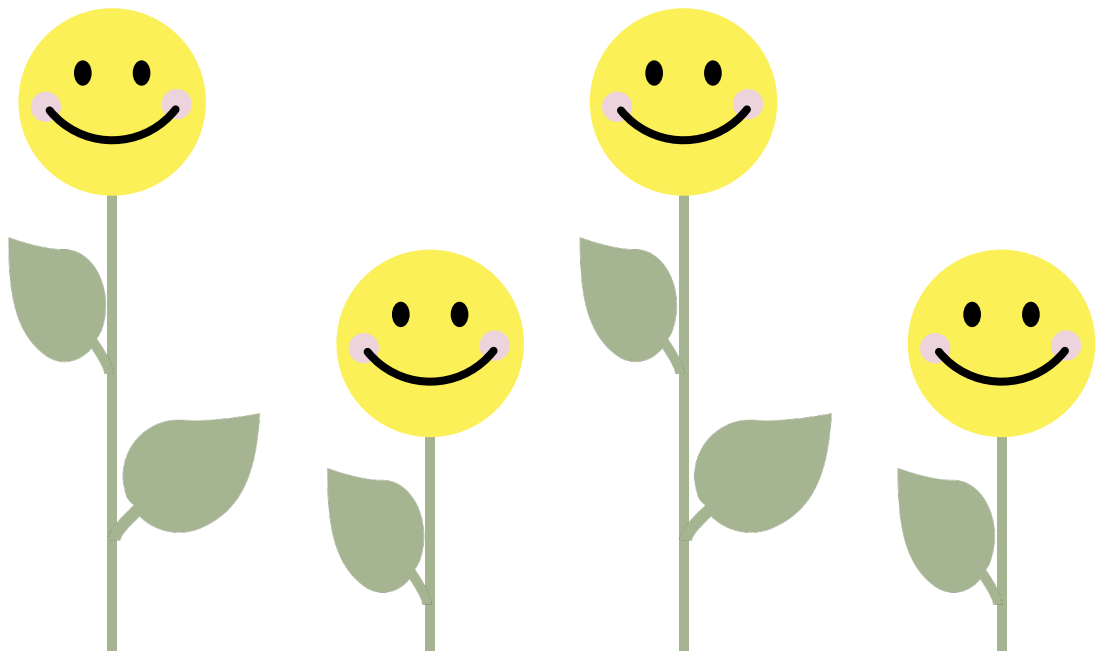
4 groups of 2 =



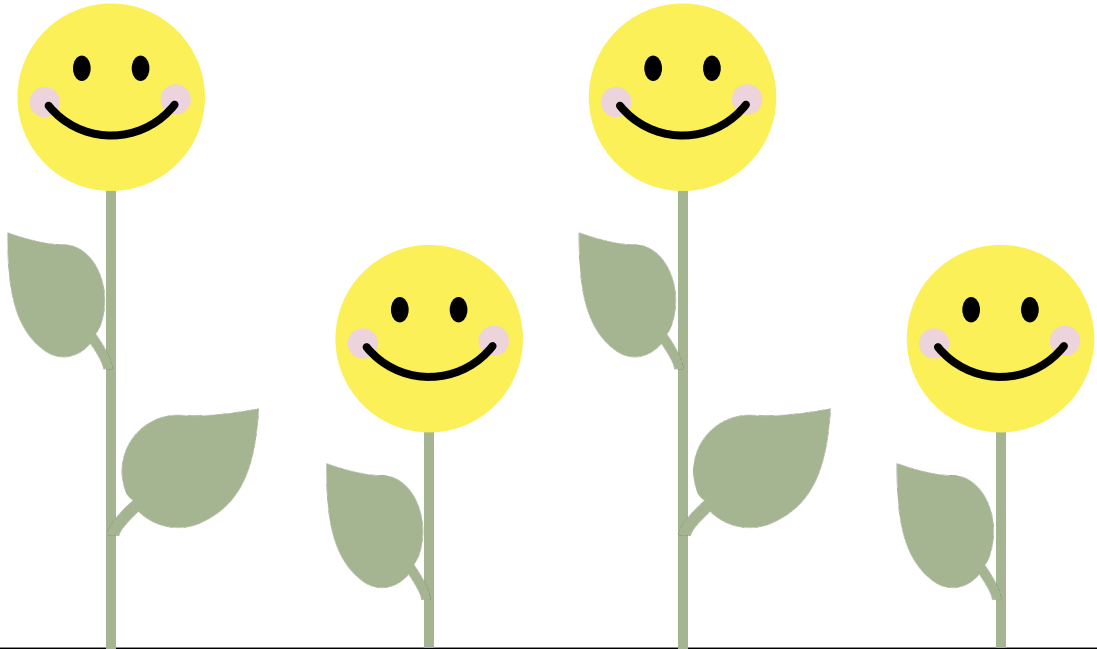
4 groups of 3 =



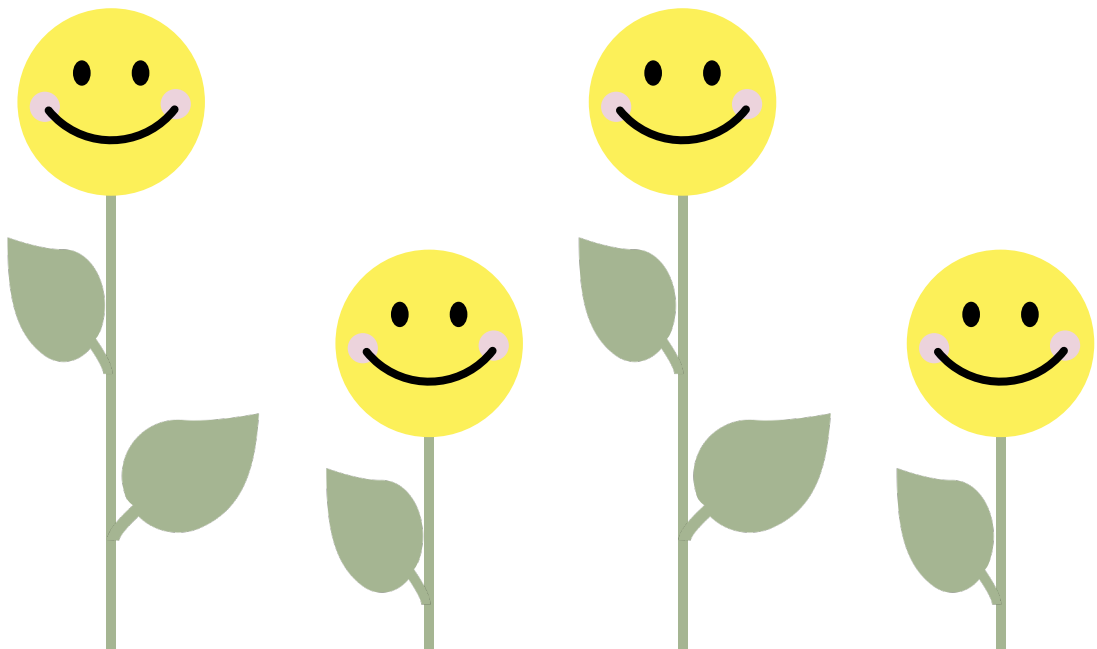
4 groups of 4 =



$$4 \text{ groups of } 5 = \square$$



$$4 \text{ groups of } 6 = \square$$



$$4 \text{ groups of } 7 = \square$$



$$4 \text{ groups of } 8 = \square$$

