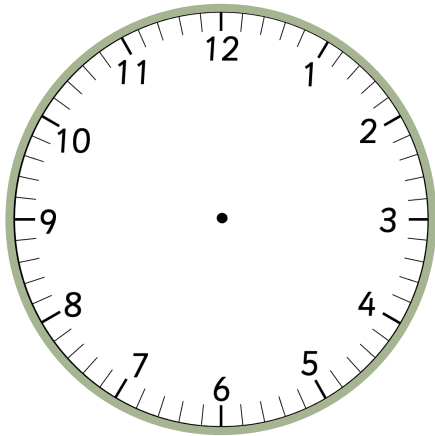
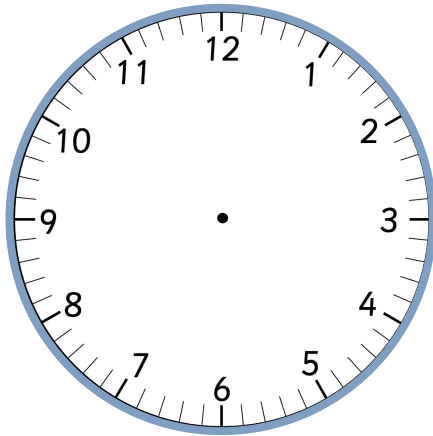


O'clock Time

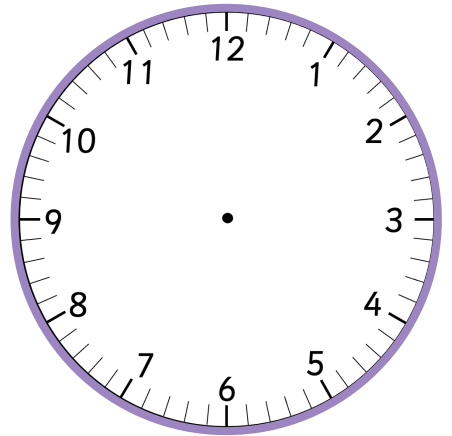
Draw the hands on the analogue clocks to match the digital clocks.



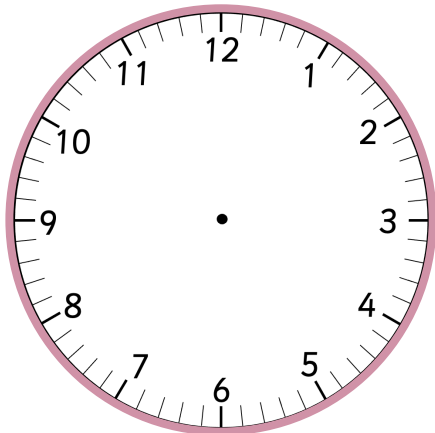
6:00



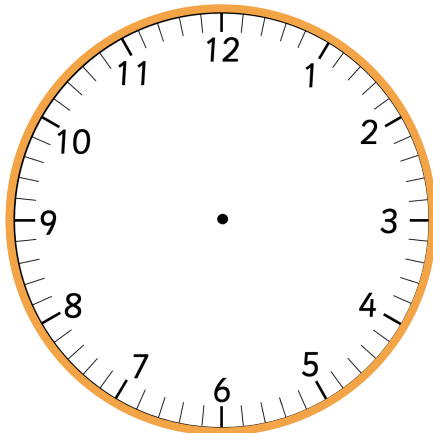
7:00



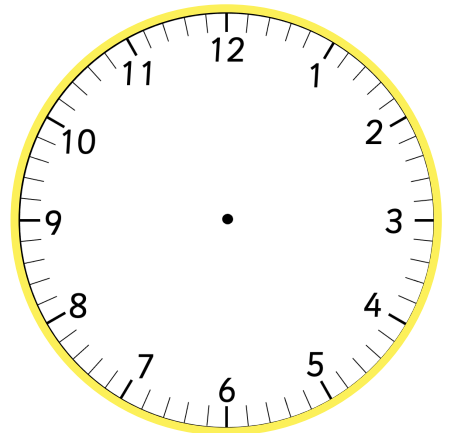
10:00



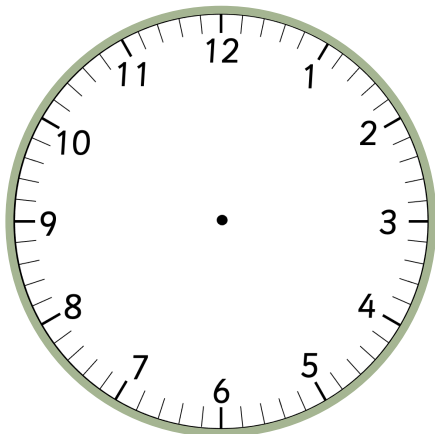
3:00



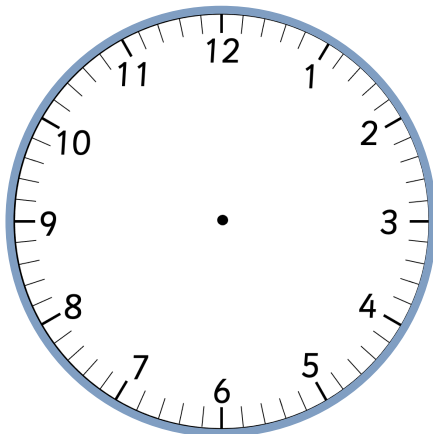
8:00



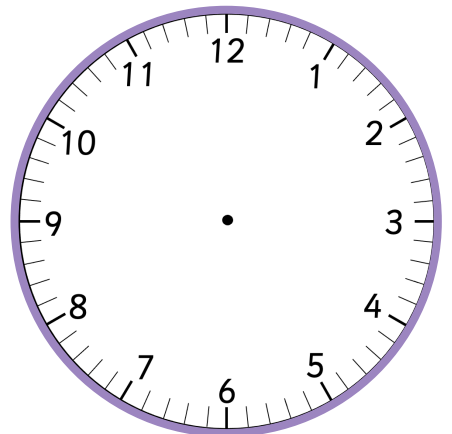
1:00



11:00



2:00

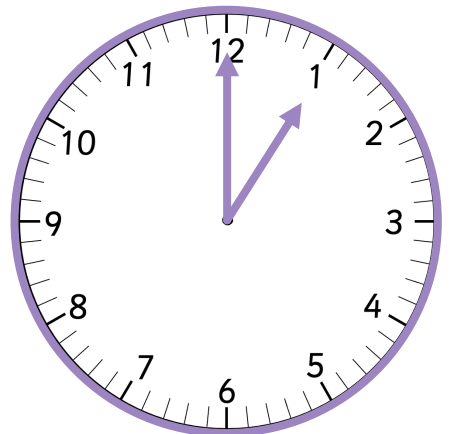
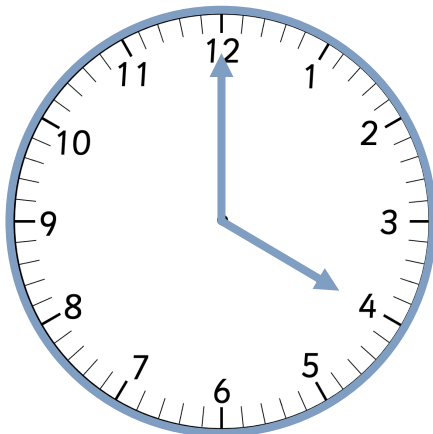
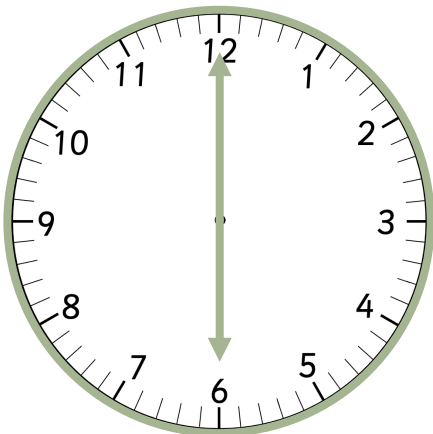
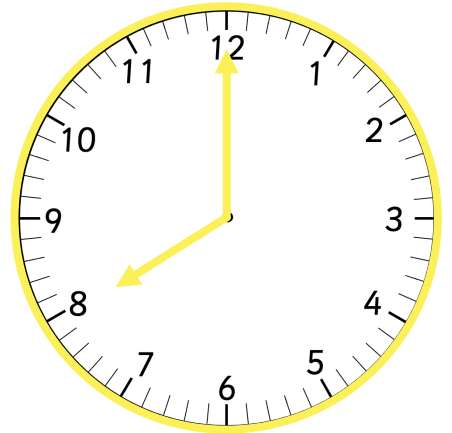
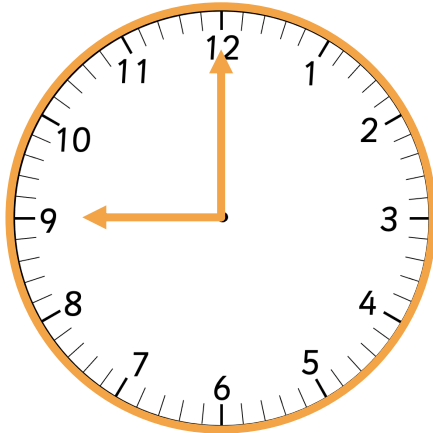
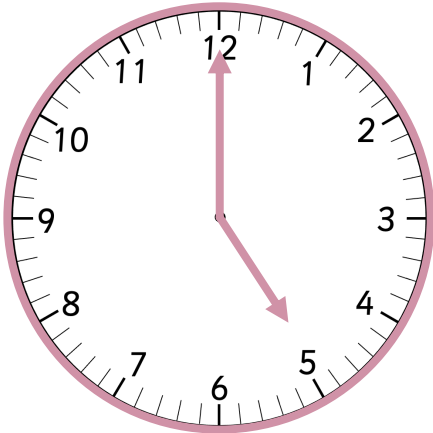
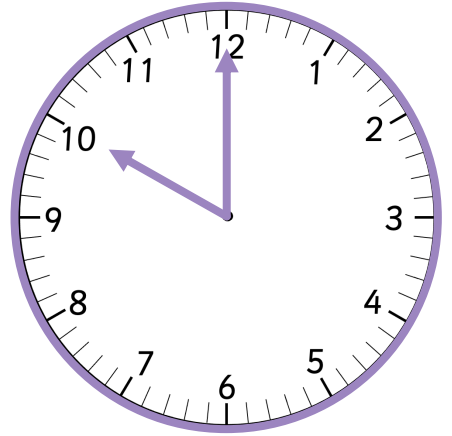
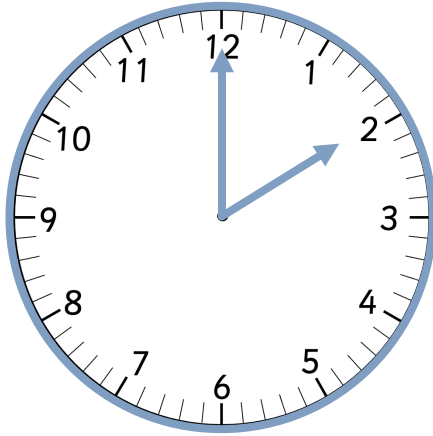
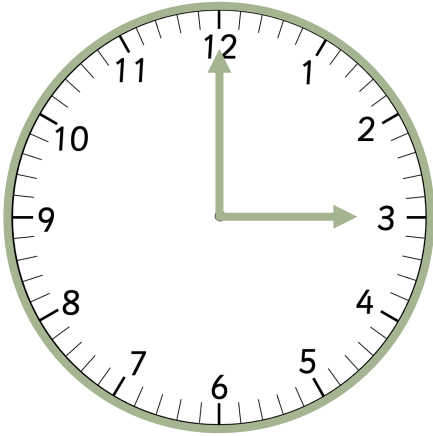


5:00



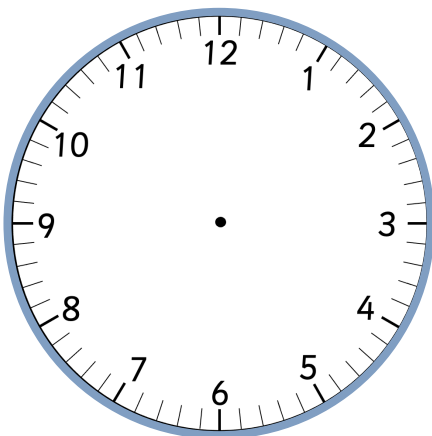
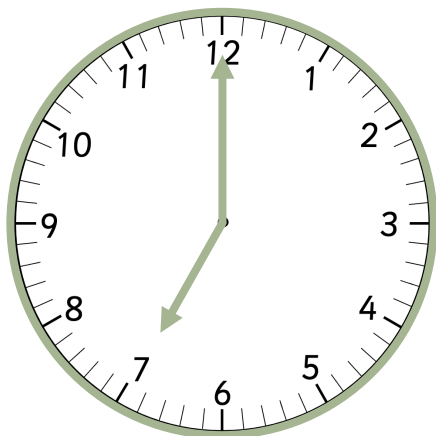
O'clock Time

Fill in the digital clocks to match the hands on the analogue clocks.

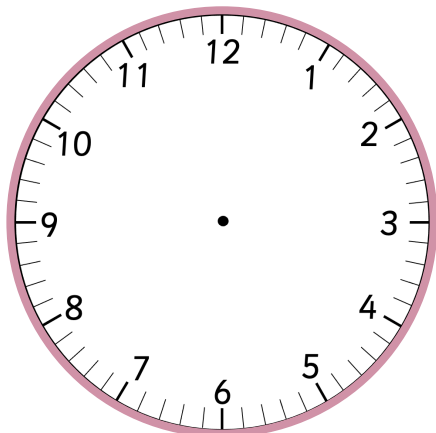
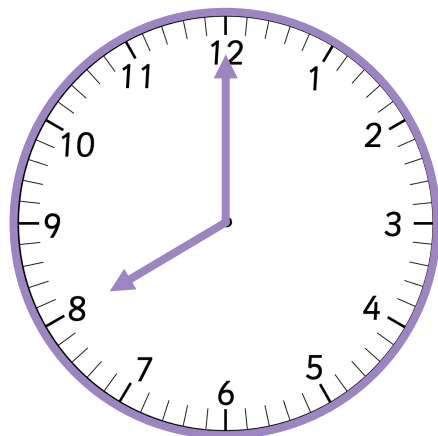


O'clock Time

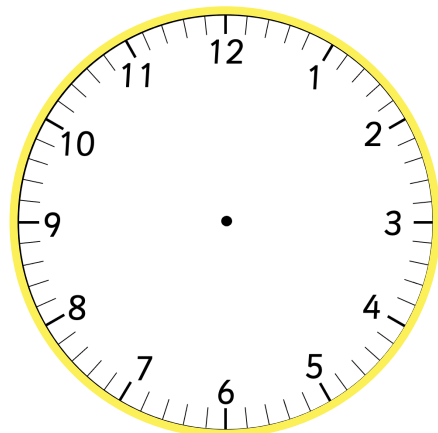
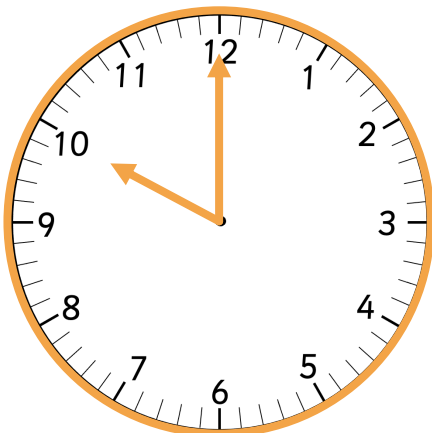
Fill in the missing parts of the clock to match the given times.



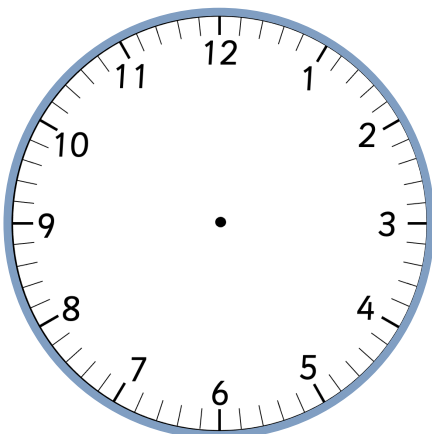
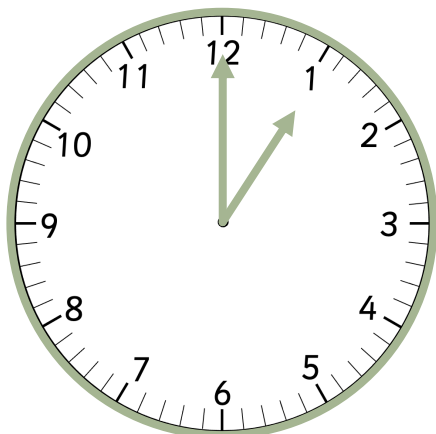
12:00



4:00



2:00



9:00

